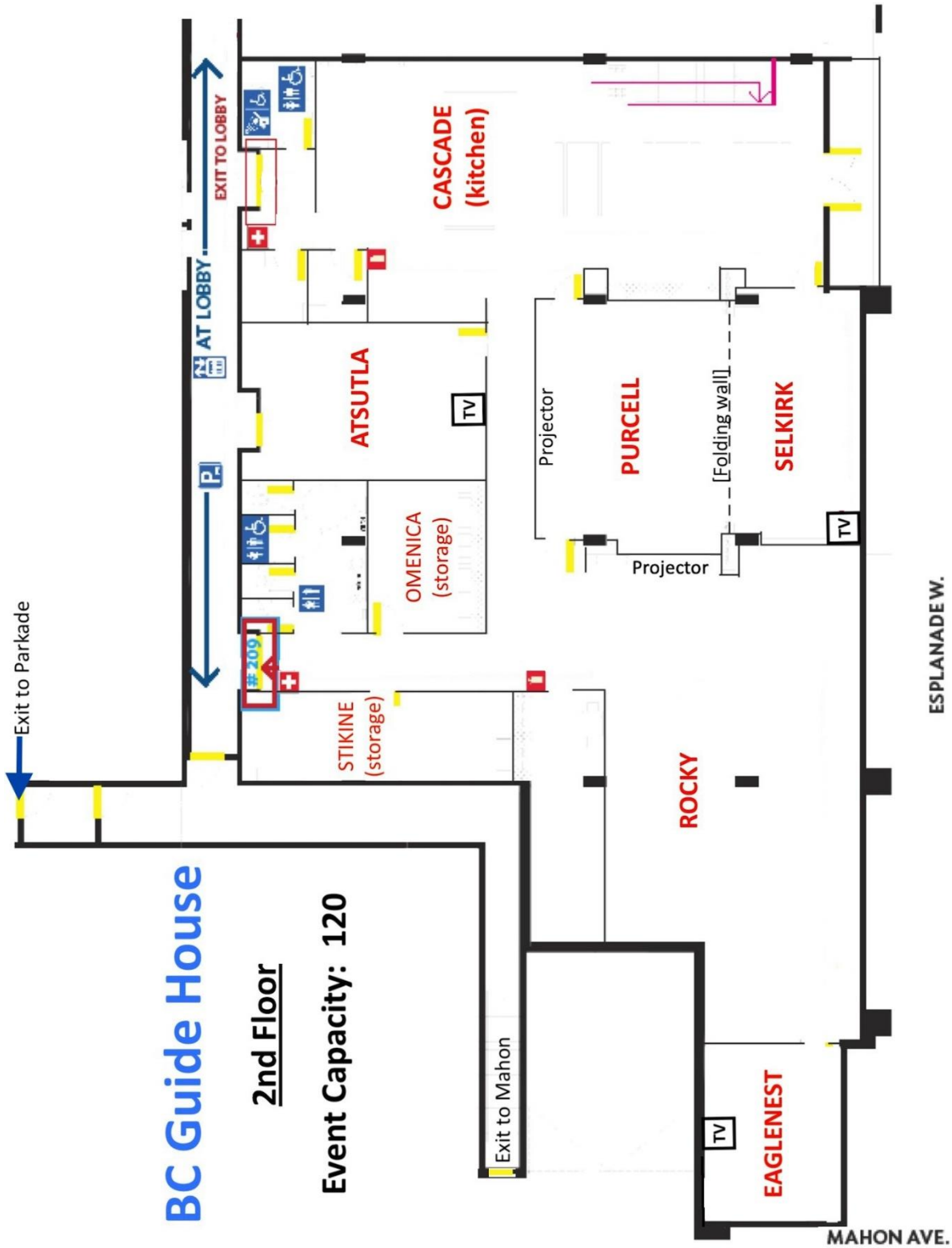


# BC Guide House

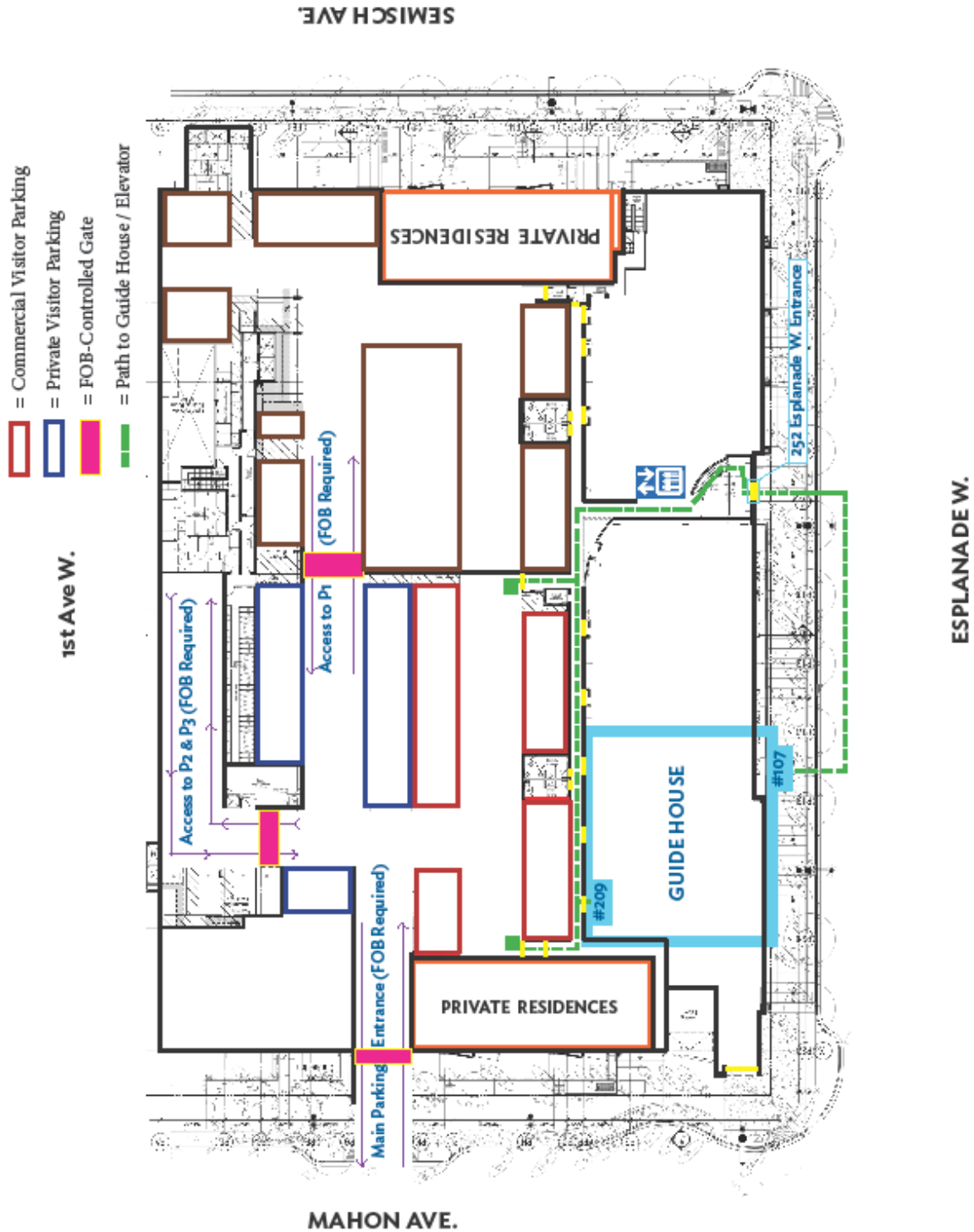
## 1st Floor

Event capacity: 120

Overnight: 20



# GGC PARKING MAP



**Return furniture back to original place, photos below for reference.**

## CASCADE



## PURCELL & SELKIRK



## PURCELL



## SELKIRK



## ATSULA





## ROCKY



# ROCKY



## ROCKY



## SKAGIT



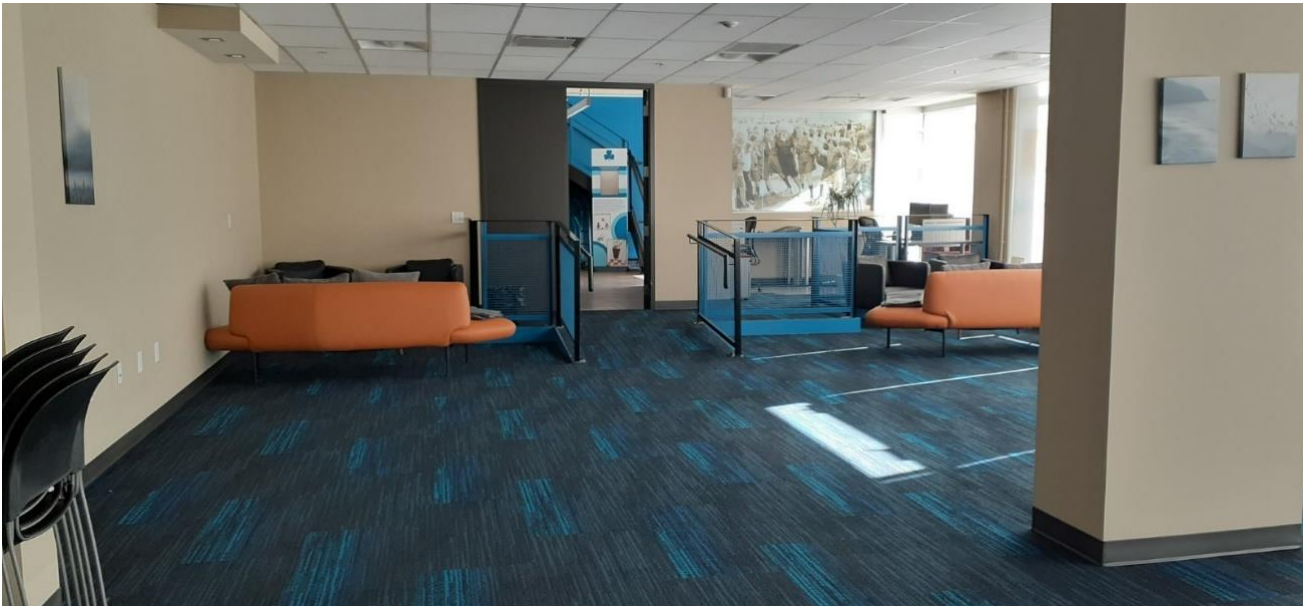
## SKAGIT



## BEAVERFOOT



## CYPRESS



## CYPRESS

