

Europe Region
Challenge
Sparks & Embers



2021

The Europe Region



- Part of WAGGGS, the largest worldwide organization for girls and young women
- 10 million girls and women involved in 150 countries within WAGGGS
- The Europe Region has 64 national Girl Guide and Scout organizations in 41 countries
- There are 1.2 million girls in the Europe Region

The images on the next slides are from the WAGGGS website: www.waggs.org

Logos From the Member Countries

- Guess which of the Europe Region countries the following Girl Guide logos are from. This is the Europe Region logo.



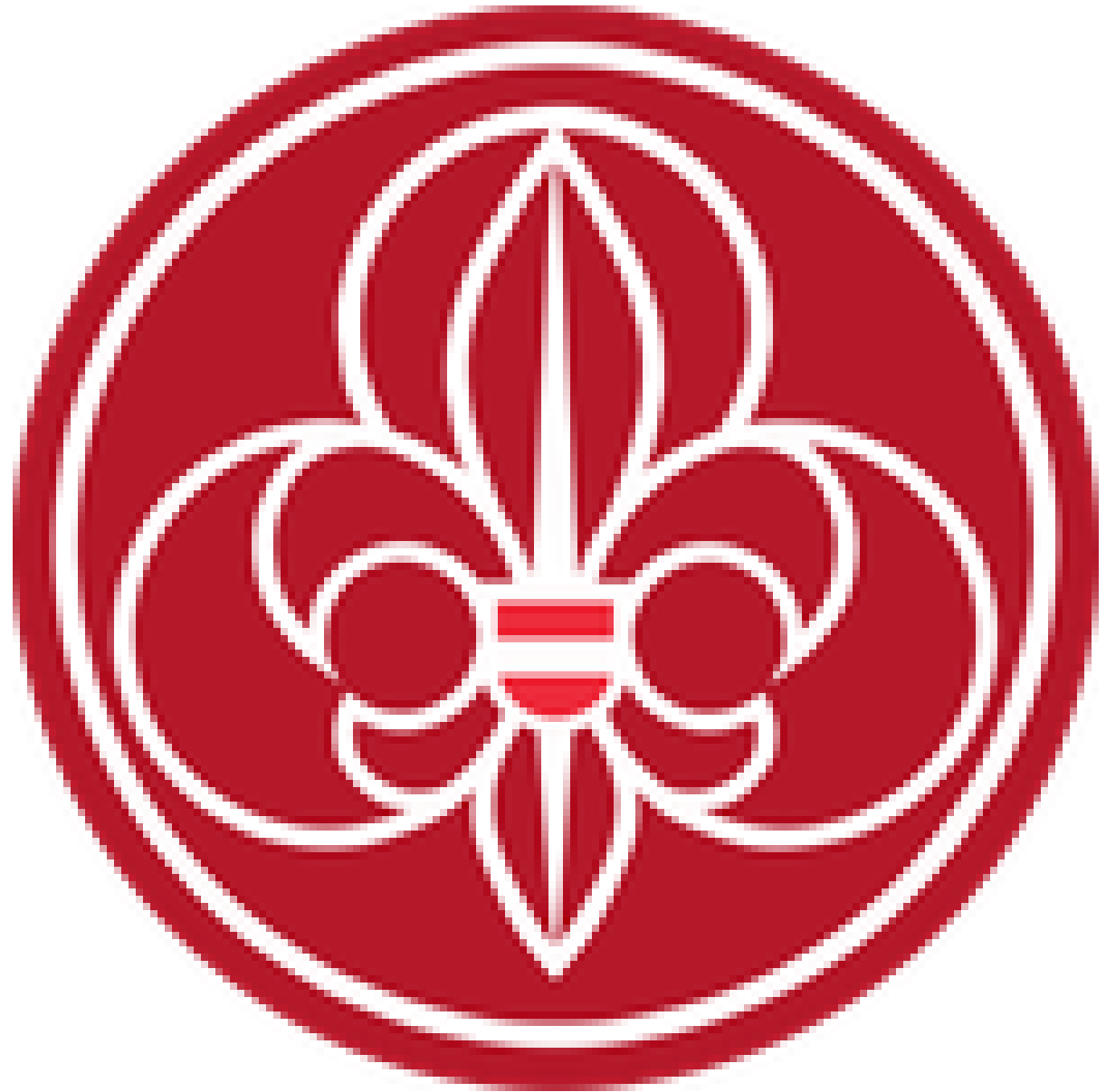
Which Country is this:

1. Albania

2. Austria

3. Armenia

4. Belarus



Which Country is This:

1. Belgium

2. Denmark

3. Cyprus

4. Czech
Republic



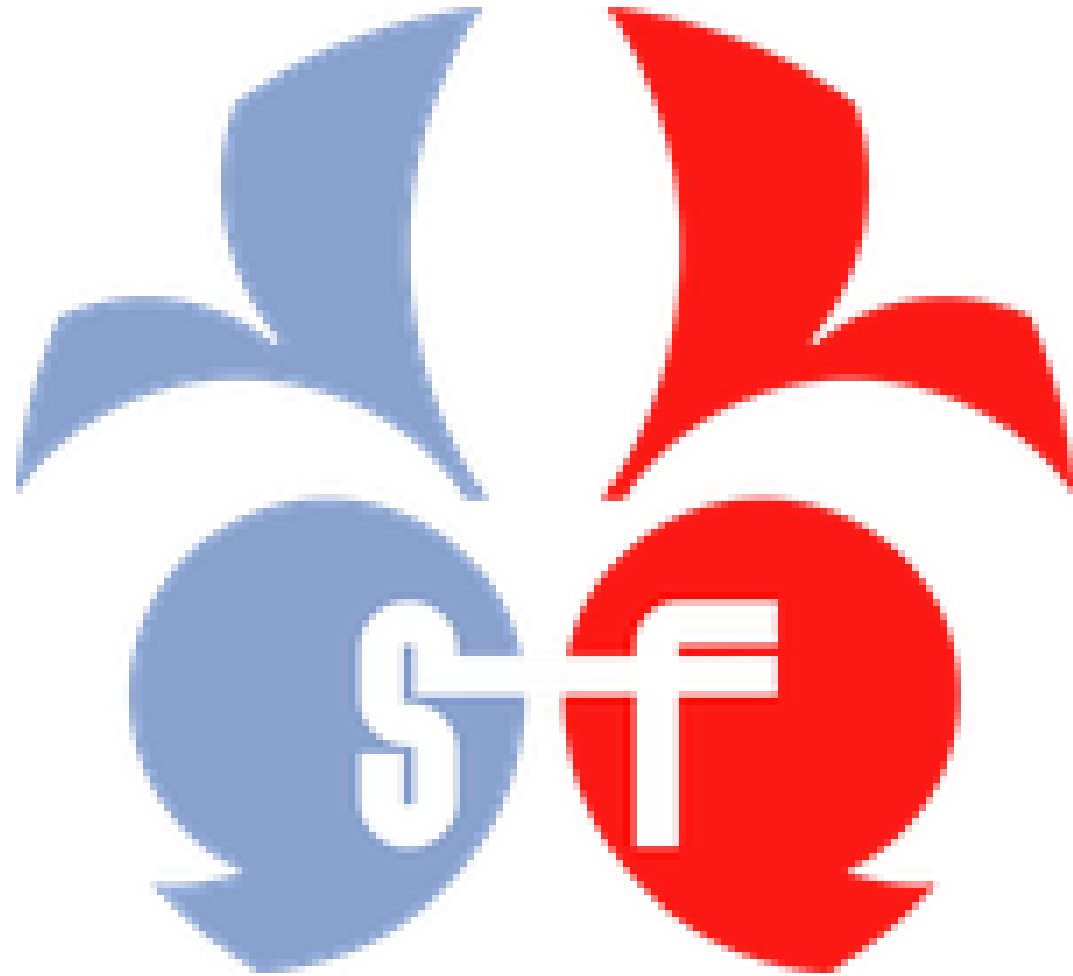
Which Country is This:

1. France

2. Georgia

3. Germany

4. Finland



Which Country is This?

1. Greece

2. Ireland

3. Israel

4. Hungary



Which Country is This?

1. Ukraine

2. Luxembourg

3. Russian
Federation

4. Monaco



Which Country is This?

1. Monaco

2. Norway

3. Poland

4. Netherland



ALLTID BEREDT

Which Country is This?

1. Turkey

2. Switzerland

3. Sweden

4. Saint Kitts



Word Search

- Try to find the Europe Region countries in the word search
- The 41 countries in the Europe Region are:
 - Albania, Armenia, Austria, Azerbaijan, Belarus, Belgium, Cyprus, Czech Republic, Denmark, Estonia, Finland, France, Georgia, Germany, Greece, Hungary, Iceland, Ireland, Israel, Italy, Latvia, Liechtenstein, Lithuania, Luxembourg, Malta, Monaco, Netherlands, Norway, Poland, Portugal, Romania, Russian Federation, San Marino, Slovak Republic, Slovenia, Spain, Sweden, Switzerland, Turkey, Ukraine, United Kingdom

The word search was developed on an online word search program -
www.superteacherworksheets.com

Name: _____

Europe Region

I A I N A M O R C P M E L U X E M B O U R G W
S S P N G F R I E Z N A S I C E L A N D Q C T
R L L Q O B R Z T S E E L W Y S Y E K R U T L
A I M O L R E A S A T C T T I J D N A L E R I
E E G C V W W L N W L O H H A T E C E E R G T
L C T M H A H A G C E Y N R E U Z J V O U L H
F H G L D A K U Y I E D A I E R G E Q M S I U
I T E A N I M R N F U I E R A P L E R X S A A
N E O G A N O C E G C M D N M U U A R L I L N
L N R U L A N A Y P A N S E L E K B N M A G I
A S G T O B A P U L U R T P N A N R L D A N A
N T I R P L C H P M U B Y G A M T I A I S N D
D E A O A A O M S U R A L E B I A V A I C T Y
Q I Q P Y A M A Z E R B A I J A N R I X N Z U
Q N S A N M A R I N O B G S C F G M K A N E L
S L O V E N I A A I R T S U A S U R P Y C R O

Find the following words in the puzzle.

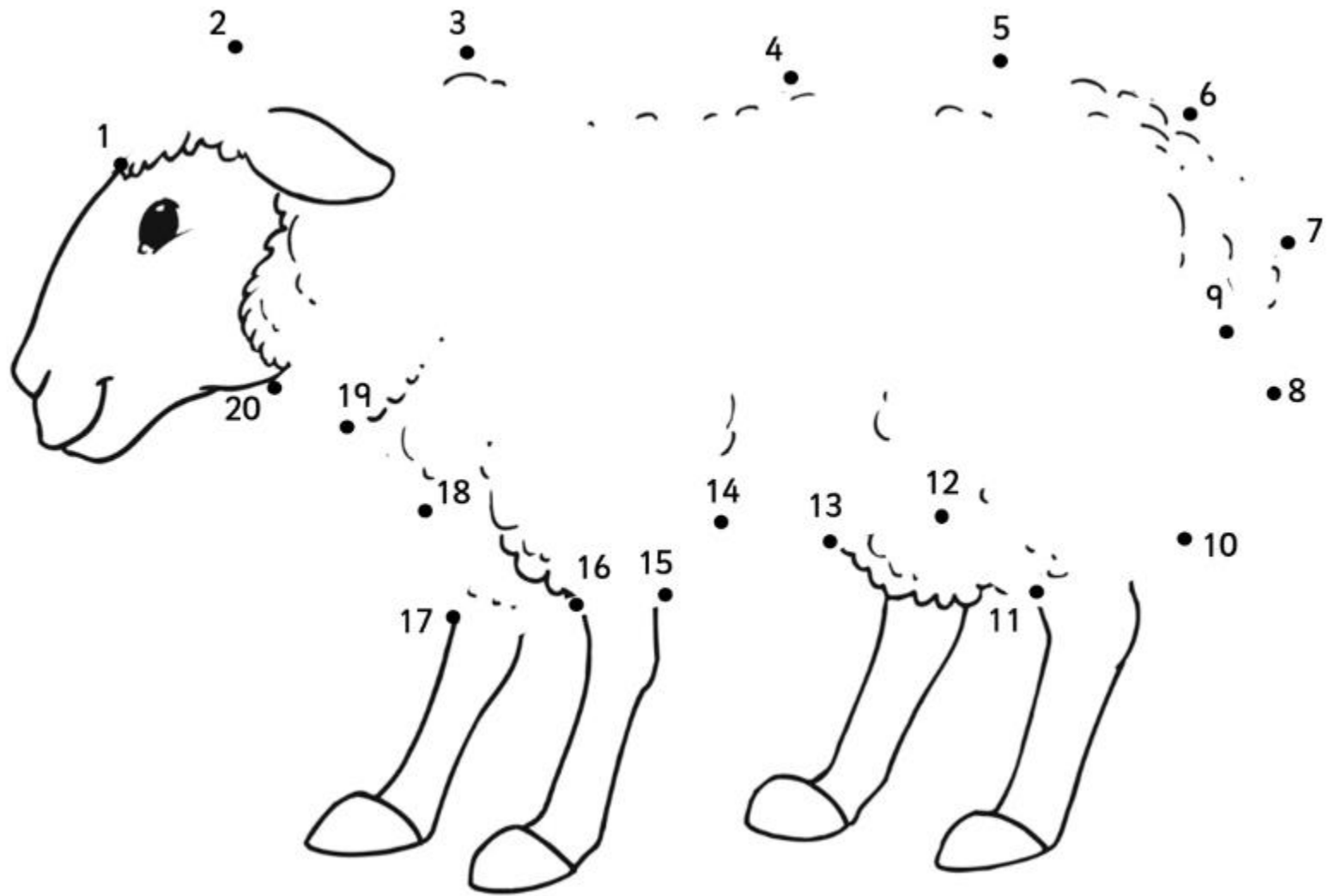
Words are hidden     and .

ALBANIA	DENMARK	ICELAND	MALTA	SAN MARINO
ARMENIA	ESTONIA	IRELAND	MONACO	SLOVAK
AUSTRIA	FINLAND	ISRAEL	NETHERLANDS	REPUBLIC
AZERBAIJAN	FRANCE	ITALY	NORWAY	SLOVENIA
BELARUS	GEORGIA	LATVIA	POLAND	SPAIN
BELGIUM	GERMANY	LIECHTENSTEIN	PORTUGAL	SWEDEN
CYPRUS	GREECE	LITHUANIA	ROMANIA	SWITZERLAND
CZECH	HUNGARY	LUXEMBOURG	RUSSIA	TURKEY
REPUBLIC				UKRAINE

Sheep Activity

- Have fun connecting the dots to make a cute, cuddly animal
- This can be coloured after

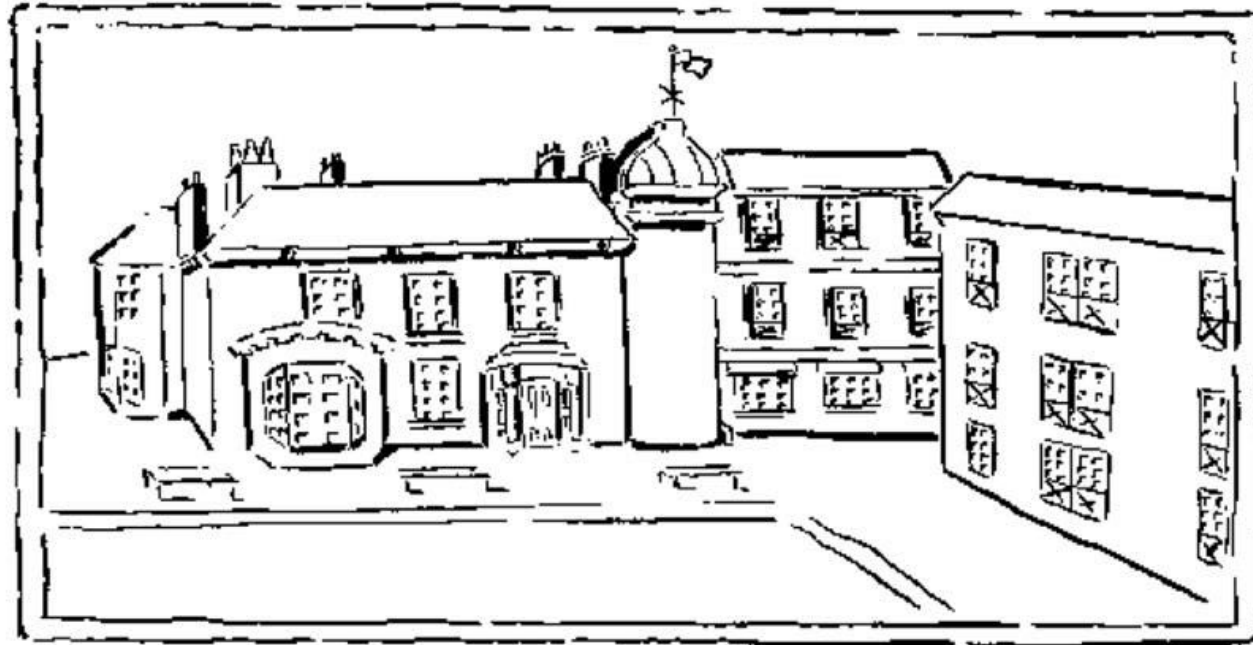
From: [pinterest.com](https://www.pinterest.com)



Pax Lodge Colouring Sheet

- Here is a picture of Pax Lodge, enjoy colouring it and make it as bright as possible

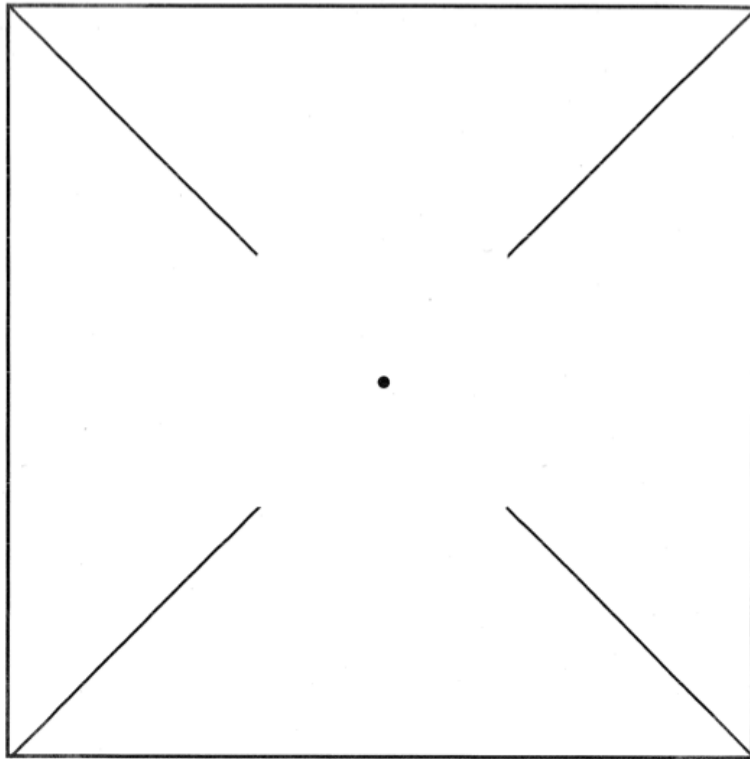
PAX LODGE



ENGLAND

Pinwheel Craft

PINWHEEL TEMPLATE



INSTRUCTIONS

1. Make a pair of squares. Start out by cutting two identical squares from paper or cardstock. If you are keen on using templates, you can choose two from any of our pinwheel templates and print them out on Letter or A4 size paper or card stock.
2. Decorate the squares. You can leave the squares plain or draw some patterns or designs on them.
3. Cut out the squares. Cut out both paper squares.
4. Glue the squares together. Glue the undecorated sides of the squares together. Remember to apply glue not just along the edges, but on the entire back area of the squares. Let the glue dry.
5. Cut four slits. Cut along the four diagonal dotted lines. If you're not using templates, cut four diagonal lines starting from the corners going up halfway to the center of the square. Bring one tip to the center.
6. After making the four slits, you will have 8 tips on your square. Take one of the tips and bring it to the center of the square without creasing the paper. You can glue the tip in place or just hold it with your hand as you do the next steps.
7. Alternate which tip you bring to the center.
8. Insert a push pin at the center.
9. Attach the pin wheel to a pencil or straw.

Let's Make Something Tasty – Chocolate Fondue

- What you will need:
 - Tooth picks
 - Fruit of any kind you like
 - Chocolate
- With adult supervision, put the chocolate in a bowl and heat in the microwave until the chocolate is melted. Cut the fruit into bite size pieces. Using the tooth picks, dip the fruit into the melted chocolate and enjoy chocolate fondue inspired by Switzerland.
- You can use chocolate syrup instead of block chocolate if you do not want to melt the chocolate.